

AIPEDCAM – Installation Guide & Configuration Settings

1. Verify Camera View Before Installation

Use a test monitor to confirm the desired camera view from the intended mounting location prior to installation.

2. Mounting Surface Requirements

Ensure the camera is mounted on a flat, stable surface for optimal performance and alignment.

3. Adjusting the Internal Camera Module

The internal camera module can be rotated as needed. To do this, loosen the screws indicated in the diagram below, adjust the angle, then securely tighten the screws.



4. Connect the Wi-Fi Module

Once the camera view and positioning are finalized, connect the Wi-Fi module to the camera to access the configuration settings.

Vision Unique Equipment Ltd

0161 877 2257 | vuegroup.org | hello@vue-cctv.co.uk



Configuration Guidelines for VUE AIPEDCAM

1. Access the Configuration Tool

Use a mobile device to access the camera's configuration tool.

2. Connect to the Camera's Wi-Fi

Connect to the AIPEDCAM's Wi-Fi network. The network name (SSID) will begin with **"ADAS-"**.

3. Wi-Fi Password

Enter the following password when prompted: **88888888** (eight repeated eight times).

4. Access the Configuration Interface

Open a web browser and go to: <http://192.168.60.1>

When prompted to log in, leave both the **Username** and **Password** fields blank and proceed.

Preview Tab



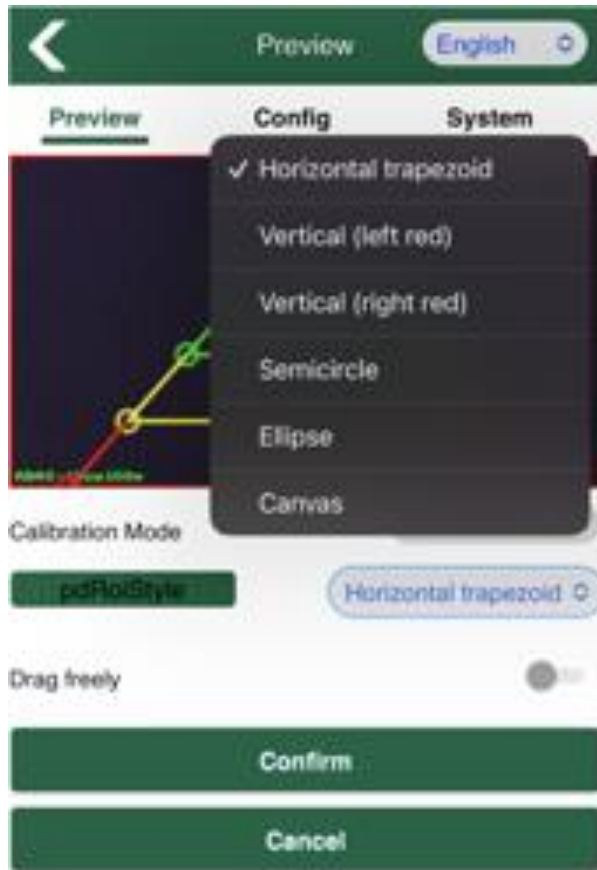
Vision Unique Equipment Ltd

0161 877 2257 | vuegroup.org | hello@vue-cctv.co.uk

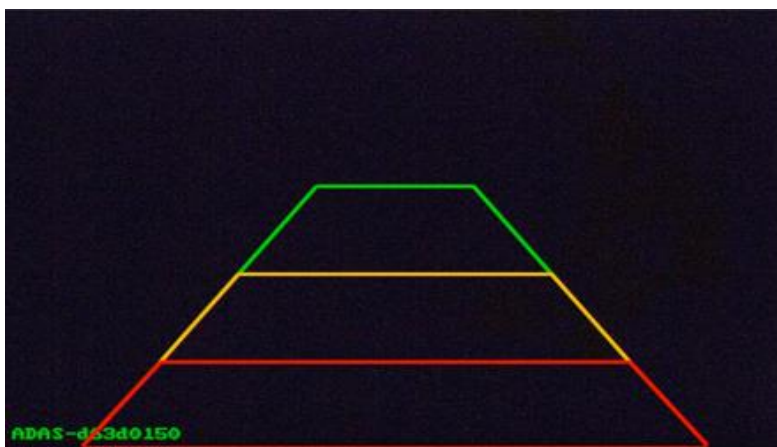
Registered Office: 510 Metroplex, Broadway, Salford Quays. M50 2UE | Company Number: 03934325 | VAT: 757745680



- Preview page shows Live camera footage to assist with mount location.
- To calibrate the Detection Zones press the calibration button (bottom left) and select the desired **RoiStyles** (Region Of Interest styles)
- The AIPEDCAM has 6 RoiStyles to choose from. Select the appropriate RoiStyle based on required use of camera.



Zone Styles

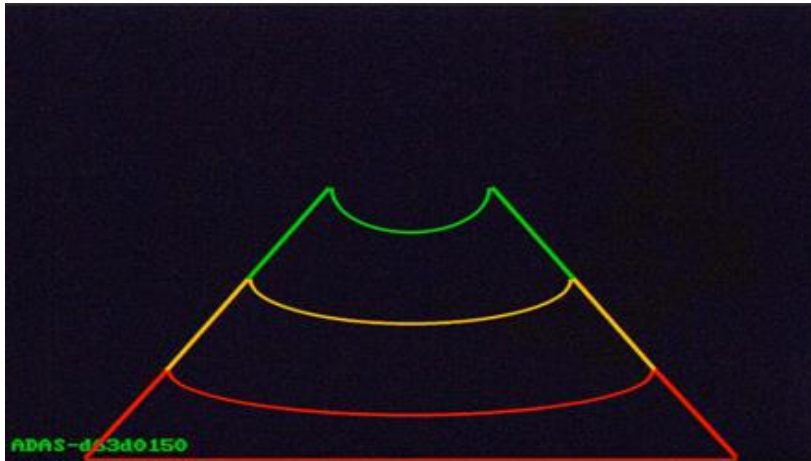


Vision Unique Equipment Ltd

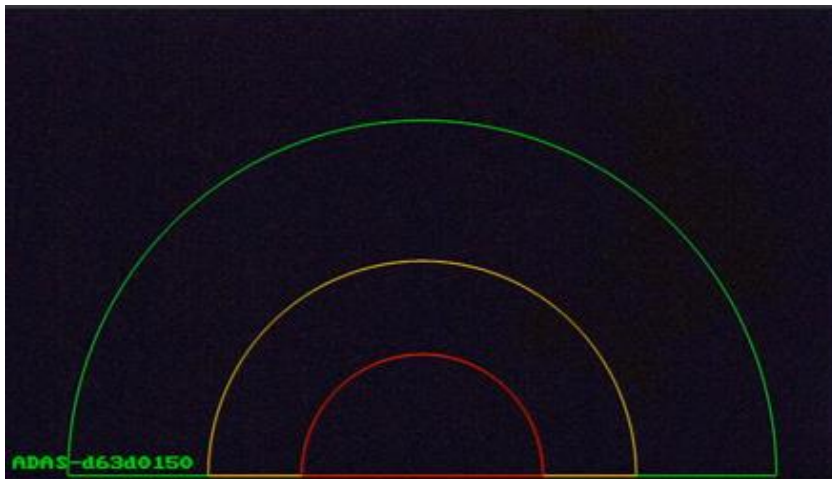
0161 877 2257 | vuegroup.org | hello@vue-cctv.co.uk

Registered Office: 510 Metroplex, Broadway, Salford Quays. M50 2UE | Company Number: 03934325 | VAT: 757745680

- The Default shape of the detection zones is the **Horizontal Trapezoid**.



- The highly recommended detection zone shape for a **Rear Facing** AIPED is the **Ellipse** style.



- The recommended detection zone shape for tall narrow vehicles is the **Semi-circle** style.



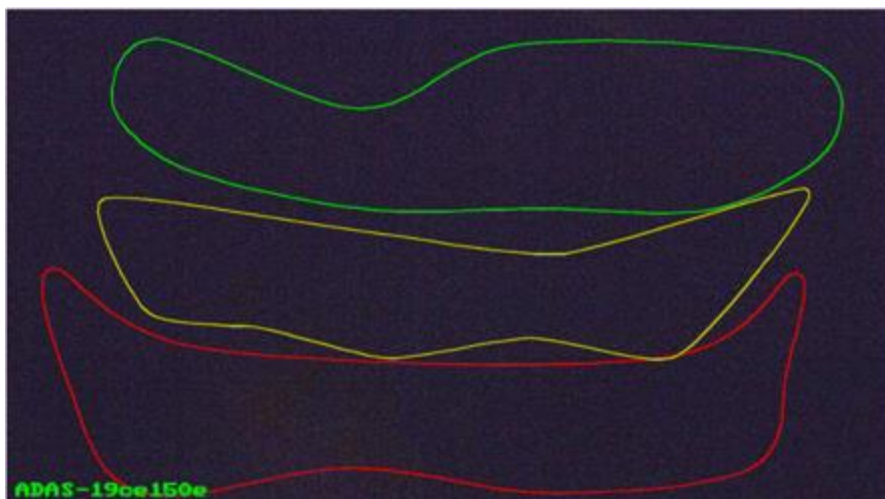
Vision Unique Equipment Ltd

0161 877 2257 | vuegroup.org | hello@vue-cctv.co.uk

Registered Office: 510 Metroplex, Broadway, Salford Quays. M50 2UE | Company Number: 03934325 | VAT: 757745680



- When mounted as a **Side Camera**, the **Vertical Trapezoid** style is recommended.



- When more complicated shapes are required in any orientation, the **Canvas** mode is recommended.

Vision Unique Equipment Ltd

0161 877 2257 | vuegroup.org | hello@vue-cctv.co.uk

Registered Office: 510 Metroplex, Broadway, Salford Quays. M50 2UE | Company Number: 03934325 | VAT: 757745680



Configuration Tab

Media

- Image Mirror and Flip transform video feed from camera when used as rear camera.
- Image rotate rotates image from camera by 90 degrees.
- Set Resolution and Framerate as desired.

Config

Media

Alg

Network

System

Video

Image Process

☐

Image Mirror

☐

Image Flip

Image Rotate

0

AHD Stream

Resolution

720P

Framerate(fps)

25fps

CvBS StreamMode

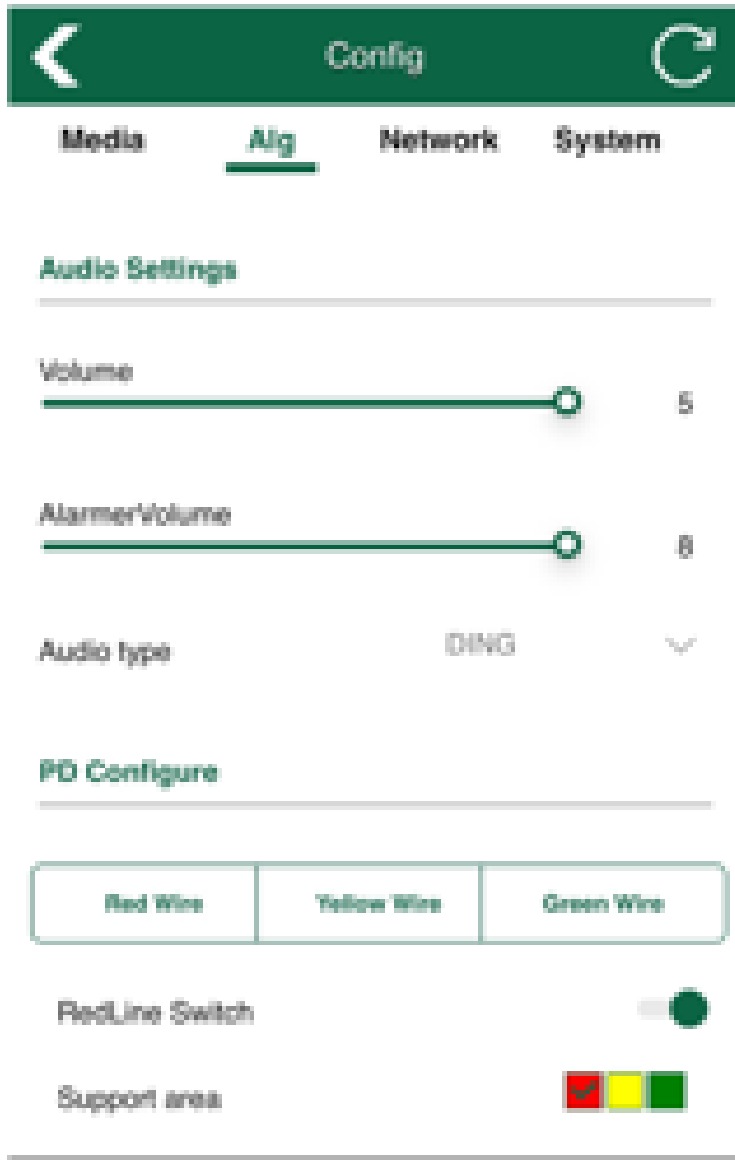
PAL

Algorithm

- Audio settings allow for adjustment of audio from the camera.
- PD configure allows for configuration of pedestrian detection.
- You can select what each output wire does.

Vision Unique Equipment Ltd

0161 877 2257 | vuegroup.org | hello@vue-cctv.co.uk



- Vision Unique Equipment Ltd**

Registered Office: 510 Metroplex, Broadway, Salford Quays. M50 2UE | Company Number: 03934325 | VAT: 757745680

Config

Support area

Enable Person Model

Enable Car Model

Enable Shelter Models

PO Model

Person

PO Sensitivity

Low

OSD FontSize

10

Person/Car Icon Size

2X

ALG Switch

PO Alarm In

PO Test Mode

Person Rect

- Face mosaic censors faces of people in footage.
- Mosaic size sets size of grains forming the mosaic censor.
- Alarm interval sets the wait period between alarm outputs.(Also sets audio frequency).
- Alarm out duration is the duration of the alarm being held post detection.
- Single Trigger line output switch sets which zones you want to alarm out.
- Detection zone switch sets which zones you want on screen.
- Detection zone style sets the type of zone style appearance.
- Min work speed is lowest speed threshold for detection. (Needs GPS)
- Max work speed is upper speed threshold for detection. (Needs GPS)

Vision Unique Equipment Ltd

0161 877 2257 | vuegroup.org | hello@vue-cctv.co.uk

Registered Office: 510 Metroplex, Broadway, Salford Quays. M50 2UE | Company Number: 03934325 | VAT: 757745680



- Alarm out mode sets the type of alarm out signal when detection occurs.
- Alarm in mode sets the type of Alarm in signal in order to start detecting.
- Shelter alarm is triggered when camera is covered.
- Sensitivity sets the algorithm sensitivity.
- Detection part sets the part of the body the camera needs to see in order to trigger event.

0161 877 2257 | vuegroup.org | hello@vue-cctv.co.uk

Registered Office: 510 Metroplex, Broadway, Salford Quays. M50 2UE | Company Number: 03934325 | VAT: 757745680



Algorithm Advanced Settings

Alarm Out Mode High Level 

Alarm In Mode High Level 

Shelter Alarm 

 Sensitivity(High→Low)

0.5	0.6	0.9
-----	-----	-----

 Sensitivity(High→Low)

0.5	0.6	0.9
-----	-----	-----

 Sensitivity(High→Low)

0.5	0.6	0.9
-----	-----	-----

Detection Part ALL 

The rest of the tabs do not need to be adjust thus they have been omitted.

Vision Unique Equipment Ltd

0161 877 2257 | vuegroup.org | hello@vue-cctv.co.uk

Registered Office: 510 Metroplex, Broadway, Salford Quays. M50 2UE | Company Number: 03934325 | VAT: 757745680